



Coyote Creek Agrivoltaic Ranch Project
Environmental Impact Report

Agency Scoping Meeting

PLNP2021-00191

Office of Planning and Environmental Review

February 8th, 2022

Introductions

Sacramento County Planning and Environmental Review:

- Alison Little, Associate Planner
- Julie Newton, Senior Planner
- Joelle Inman, Environmental Coordinator

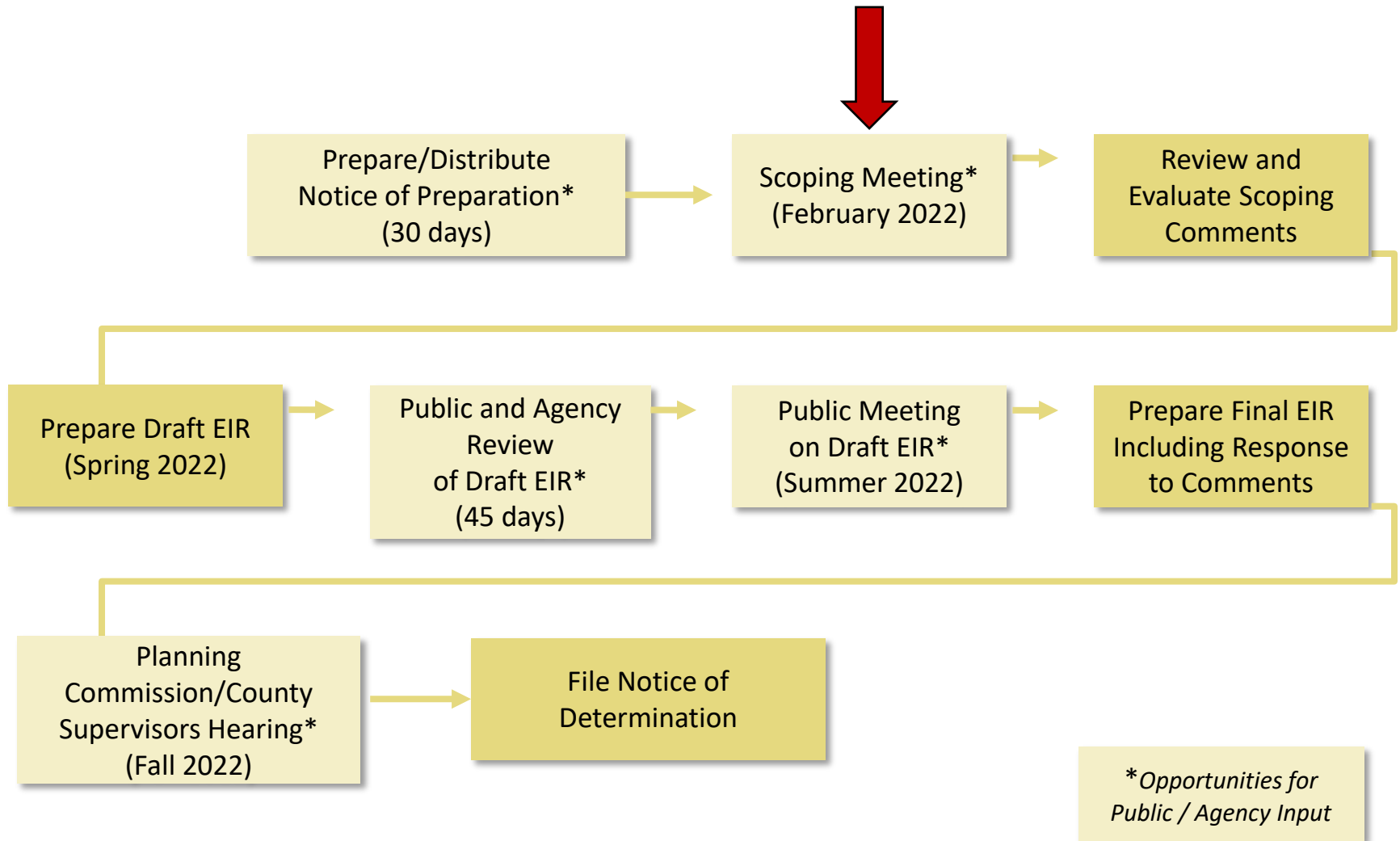
AECOM:

- Steven Smith, Project Manager
- Matthew Gerken, Project Director

Meeting Purpose

- Gather input for the Environmental Impact Report (EIR):
 - What **environmental topics** should be our focus?
 - What **alternatives and mitigation measures** should we consider?
 - What **concerns** regarding the potential impacts of the proposed project shall we document?
- Agency input will be used to develop the scope of the EIR

Environmental Review Process



Project Overview

Location:

- Barton Ranch
- South of U.S. 50, northwest of Rancho Murieta, southeast of the Prairie City State Vehicle Recreation Area

Project Site:

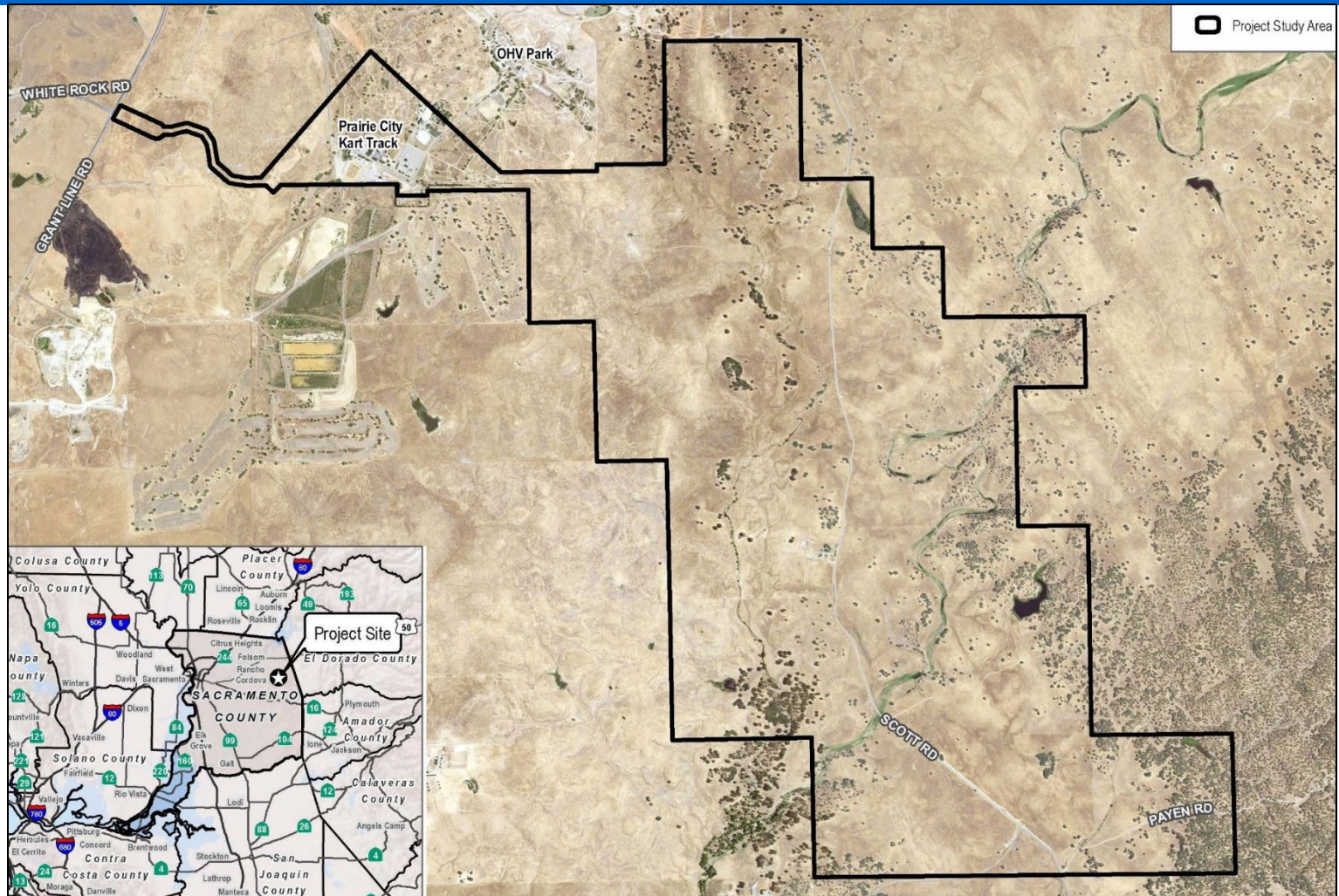
- Project parcels total ~2,555 acres
- Off-site, 1.3-mile transmission line (generation tie)

Summary:

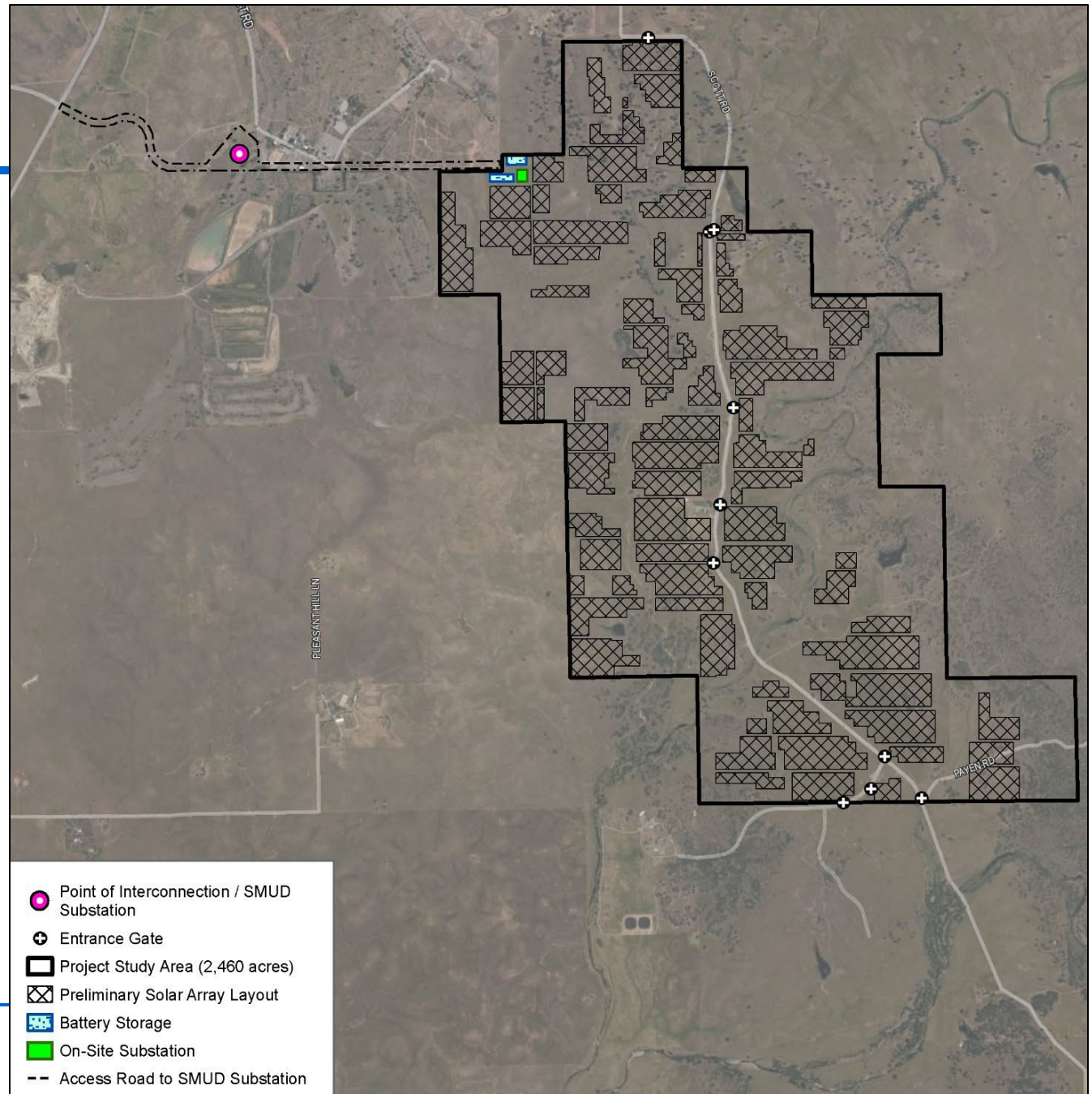
- 200-Megawatt Solar Facility
- On-site substation
- Energy storage
- Two 15-ft meteorological towers
- Backup generators
- Access and internal roads + fencing
- Transmission line + switchyard



Project Site



Site Plan



Project Objectives

- Provide a local supply of solar energy for the Sacramento County region to implement the County of Sacramento General Plan policies applicable to renewable energy.
- Cost-effective commencement of delivery of local utility-scale solar energy to support attainment of SMUD (a) 2030 Zero Net Carbon Plan targets, and (b) Integrated Resource Plan targets.
- Support SMUD region in attainment of state 2030 Renewable Portfolio Standards.
- Comply with SMUD Integrated Resource Plan siting and size criteria for local utility-scale solar facilities.
- Optimize use of existing electrical transmission and other infrastructure with existing capacity to minimize environmental impacts of new construction.
- Provide local employment and training opportunities for a variety of building trades.

Additional Details

- Solar photovoltaic panels mounted on tracking systems, grouped in arrays, arranged in blocks
- Power conversion stations
- Energy storage in warehouse/modular structures, 400MWh capacity
- Gen-tie to extend west on ~150-tall poles, ~1.3 miles to existing SMUD powerlines, may require changes @ SVRA
- 35 years estimated operation, decommission plan required to restore to current conditions

Additional Details (cont.)

Construction:

- 12 months
- Up to 250 workers per day
- 5 to 40 trips truck trips/day
- Grading will occur on significant portion of the project site
- PV panels placed on driven piles

Operation:

- Solar component to be monitored remotely
- Limited maintenance & security personnel
- 4 to 10 trips per day
- Up to 10 individuals to wash panels, 1-4 times/year for 14 days
- Proposed to continue sheep grazing

Representative Photos

Substation



Solar facility from ~ 100 feet



Representative Photos (cont.)

Access Gate and Road



Battery Storage Building



EIR Content

- The EIR will include the following chapters:
 - Executive summary
 - Introduction
 - Project description
 - Setting, impacts, and mitigation measures
 - Alternatives
 - Cumulative impacts
 - Other CEQA-required topics

EIR Topics

- Preliminary List of EIR Topics:
 - Aesthetics and Visual Resources
 - Agricultural Resources
 - Air Quality
 - Biological Resources
 - Climate Change
 - Cultural and Tribal Cultural Resources
 - Hazards
 - Hydrology and Water Quality
 - Land Use
 - Noise and Vibration
 - Transportation
 - Wildfire

Scoping Comments

NOP comment period ends on February 18th, 2022

Written comments to:

Joelle Inman, Environmental Coordinator
Planning and Environmental Review
827 7th Street, Room 225
Sacramento, CA 95814

or via e-mail at: CEQA@saccounty.net