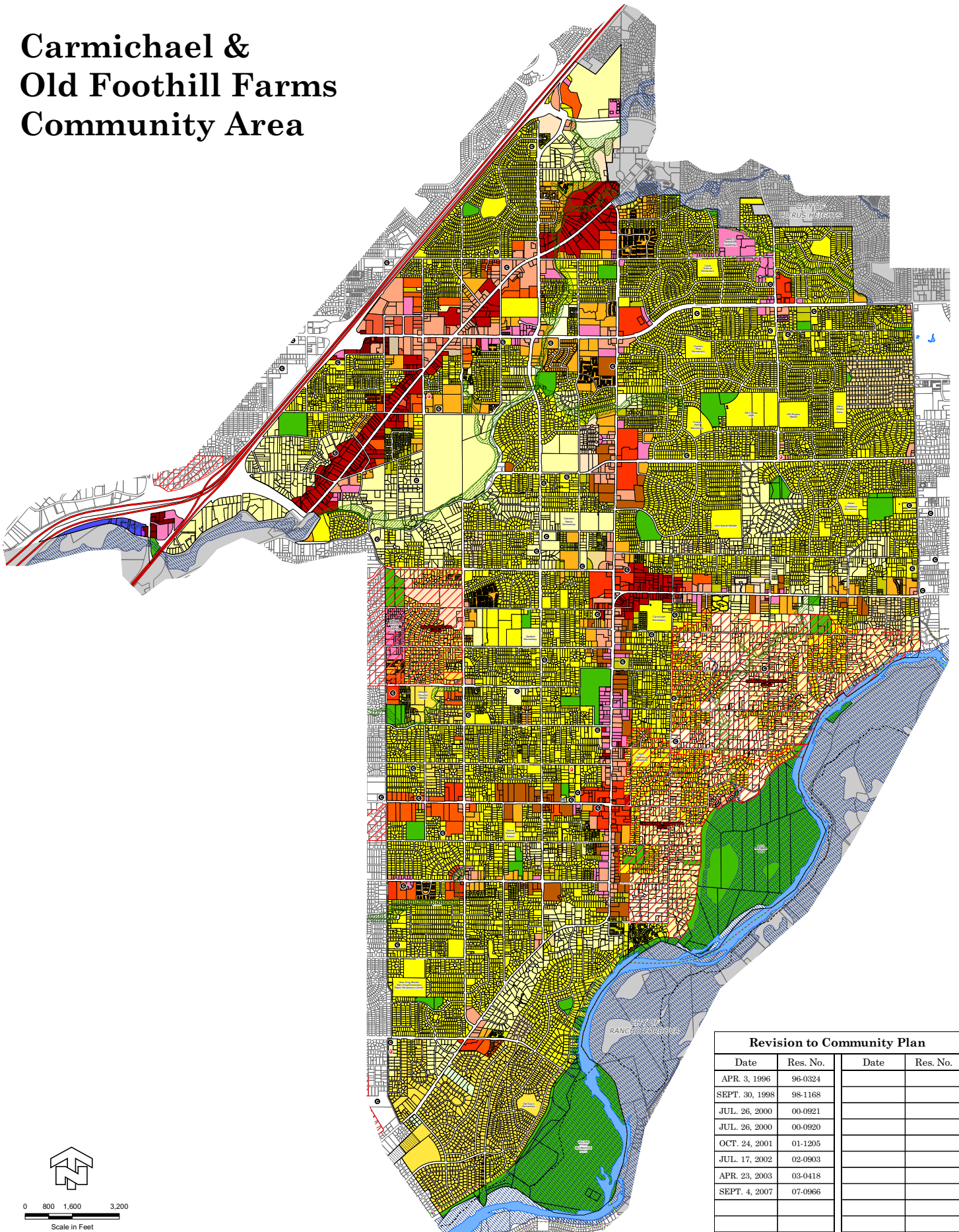


Carmichael & Old Foothill Farms Community Area



Revision to Community Plan			
Date	Res. No.	Date	Res. No.
APR. 3, 1996	96-0324		
SEPT. 30, 1998	98-1168		
JUL. 26, 2000	00-0921		
JUL. 26, 2000	00-0920		
OCT. 24, 2001	01-1205		
JUL. 17, 2002	02-0903		
APR. 23, 2003	03-0418		
SEPT. 4, 2007	07-0966		



0 800 1,600 3,200
Scale in Feet



- Utility
- Permanent Ag Extensive 160
- Agricultural Residential 10
- Residential Density 2-4
- Residential Density 15
- Mobilehome Subdivision
- Auto Commercial
- Neighborhood Preservation Areas
- Library
- Permanent Ag Extensive 80
- Agricultural Residential 5
- Residential Density 3
- Recreation
- Special Planning Area
- Fire Station
- Permanent Ag Extensive 40
- Agricultural Residential 2
- Business & Professional
- Flood Combining Zone
- Church
- Permanent Ag Extensive 20
- Agricultural Residential 1
- Shopping Center
- Natural Stream Combining Zone
- Freeway
- Urban Reserve
- Residential Density 1
- Limited Commercial
- Parkway Corridor
- Bike Path
- Industrial Reserve
- Residential Density 2
- Residential Density 4
- Light Industrial
- Public / Quasi-Public
- Residential Density 5
- Residential Density 6
- Light Industrial
- Surface Mining
- Residential Density 7
- Residential Density 8
- Light Industrial
- Heavy Industrial
- Residential Density 9
- Residential Density 10
- Mobilehome Park
- General Commercial
- Heavy Industrial