

Sacramento County Climate Action Plan

Communitywide Greenhouse Gas Reduction and Climate Change Adaptation (Communitywide CAP)



**Communitywide CAP Stakeholder Kickoff Meeting
August 24, 2016**

Welcome and Introductions

- County Staff:
 - Surinder Singh, Principal Planner
 - John Lundgren, Senior Planner
 - Todd Taylor, Associate Planner/Project Manager
 - Judy Robinson, Sustainability Manager
- Consultants: Ascent Environmental, Inc.
 - Honey Walters, Principal
 - Erik de Kok, Senior Planner/Project Manager
 - Dimitri Antoniou, Associate Planner
- Stakeholders

Meeting Purpose

- Background
- Project Process and Components
- GHG Emissions Inventory and Methods
- Project Schedule and Milestones
- Public Involvement
- Question and Answers

Background

- Sacramento County Climate Action Plan (CAP)
 - Phase 1
 - Strategy and Framework Document, 2011
 - Phase 2
 - County Government Operations CAP, 2012 (update in-process)
 - Communitywide CAP, 2017 (in-process)

Background

- CAP Implementation Highlights (*more info at green.saccounty.net*)
 - County Fleet: Low-Carbon Fuels, Fuel-Efficient Replacements
 - County Buildings: Energy Efficiency Upgrades (16%-18% savings)
 - County Streetlights and Traffic Signals: Conversion to LED (90% savings)
 - Sac International Airport: Solar array (7 MW, 30% of airport's demand)
 - Kiefer Landfill: Waste-to-Energy (14 MW, equivalent to 9,000 homes/yr)
 - Property Assessed Clean Energy (PACE) financing programs
 - Tree Preservation Ordinance and Tree Planting standards
 - Low-Impact Development (LID) standards and Water Conservation programs

Purpose and Benefits

■ Purpose of Communitywide CAP

- Keep up to date with current legislation and guidance (e.g., CEQA Guidelines, Section 15183.5; SB 379 requirements)
- Build on County's Phase 1 and Phase 2A CAP efforts
- Comprehensive, integrated approach (GHG mitigation + adaptation)

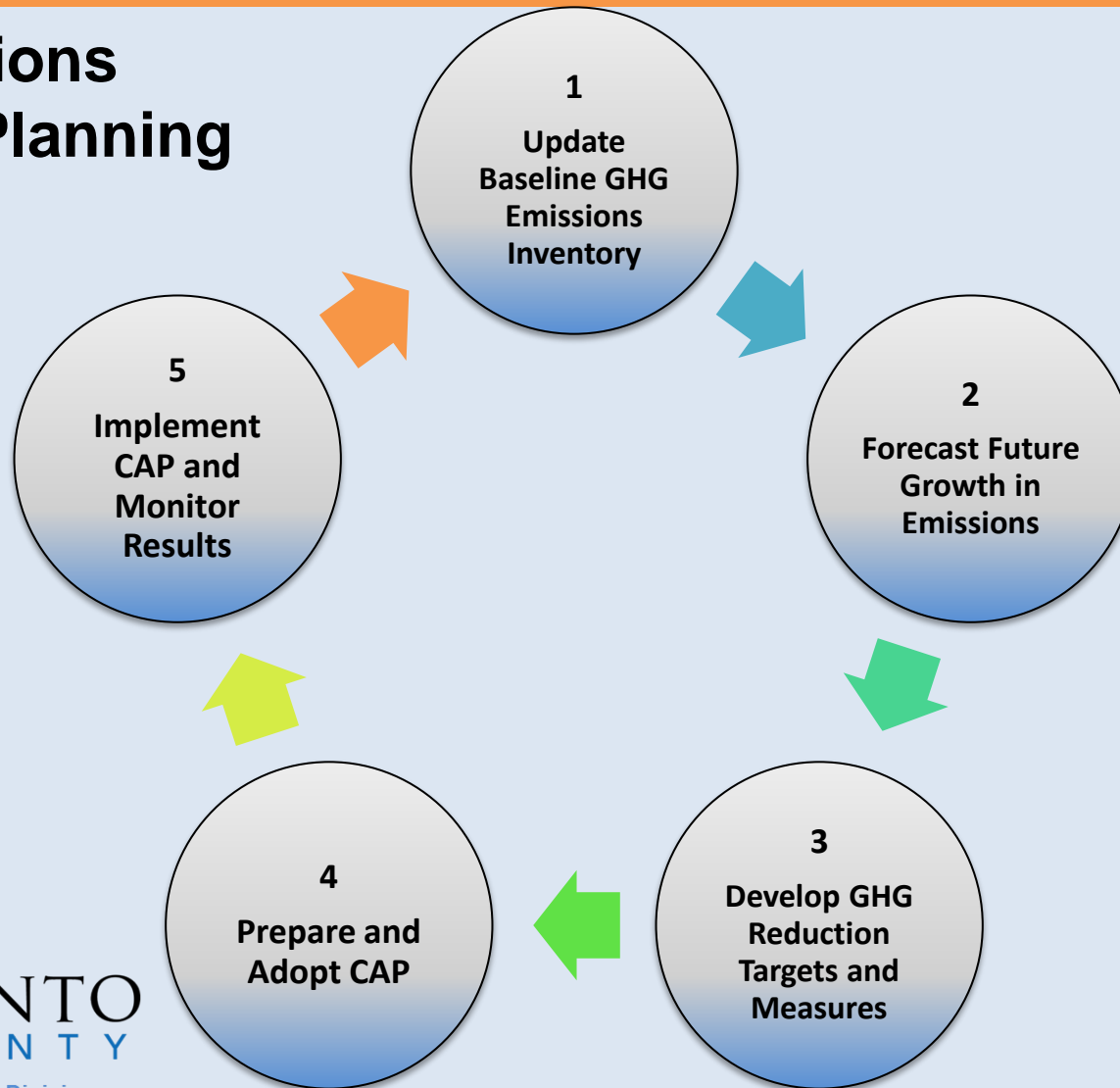
■ Benefits of Communitywide CAP

- Regulatory compliance & streamlining
- Environmental, public health, and sustainability co-benefits

PROJECT PROCESS AND COMPONENTS

Project Process and Components

GHG Emissions Reduction Planning



Project Process and Components

1. Update Baseline GHG Emissions Inventory

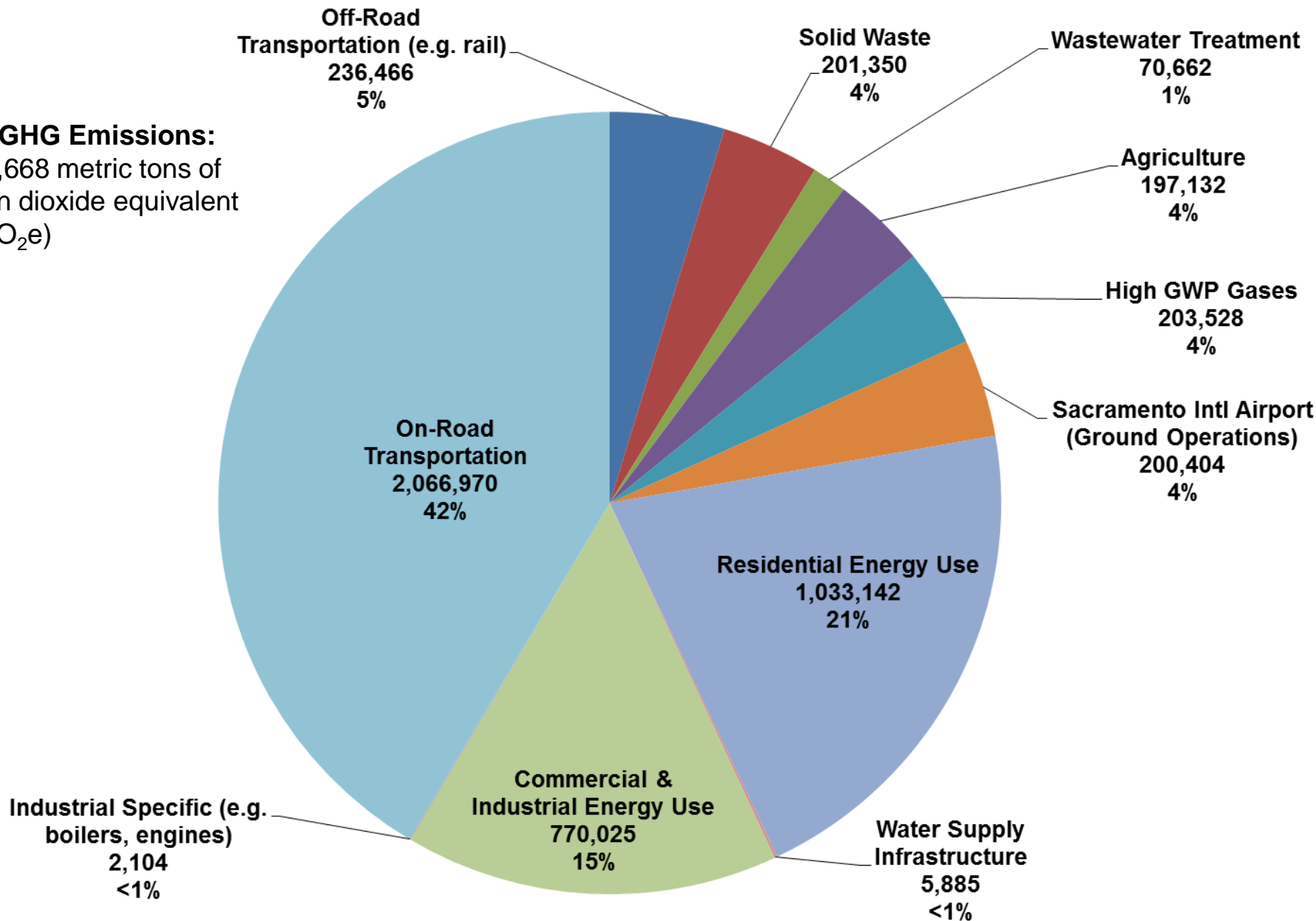
- 2005 baseline inventory, now updating for year 2015
- Unincorporated County of Sacramento
- Updating consistent with established, current GHG accounting protocols

GHG Emissions Inventory and Methods

- What emissions are included in a local GHG inventory?
 - Carbon dioxide (CO₂)
 - Methane (CH₄)
 - Nitrous oxide (N₂O)
 - Fluorinated gases (F-gases), or High-GWP gases:
 - » Hydrofluorocarbons (HFCs)
 - » Perfluorocarbons (PFCs)
 - » Sulfur hexafluoride (SF₆)

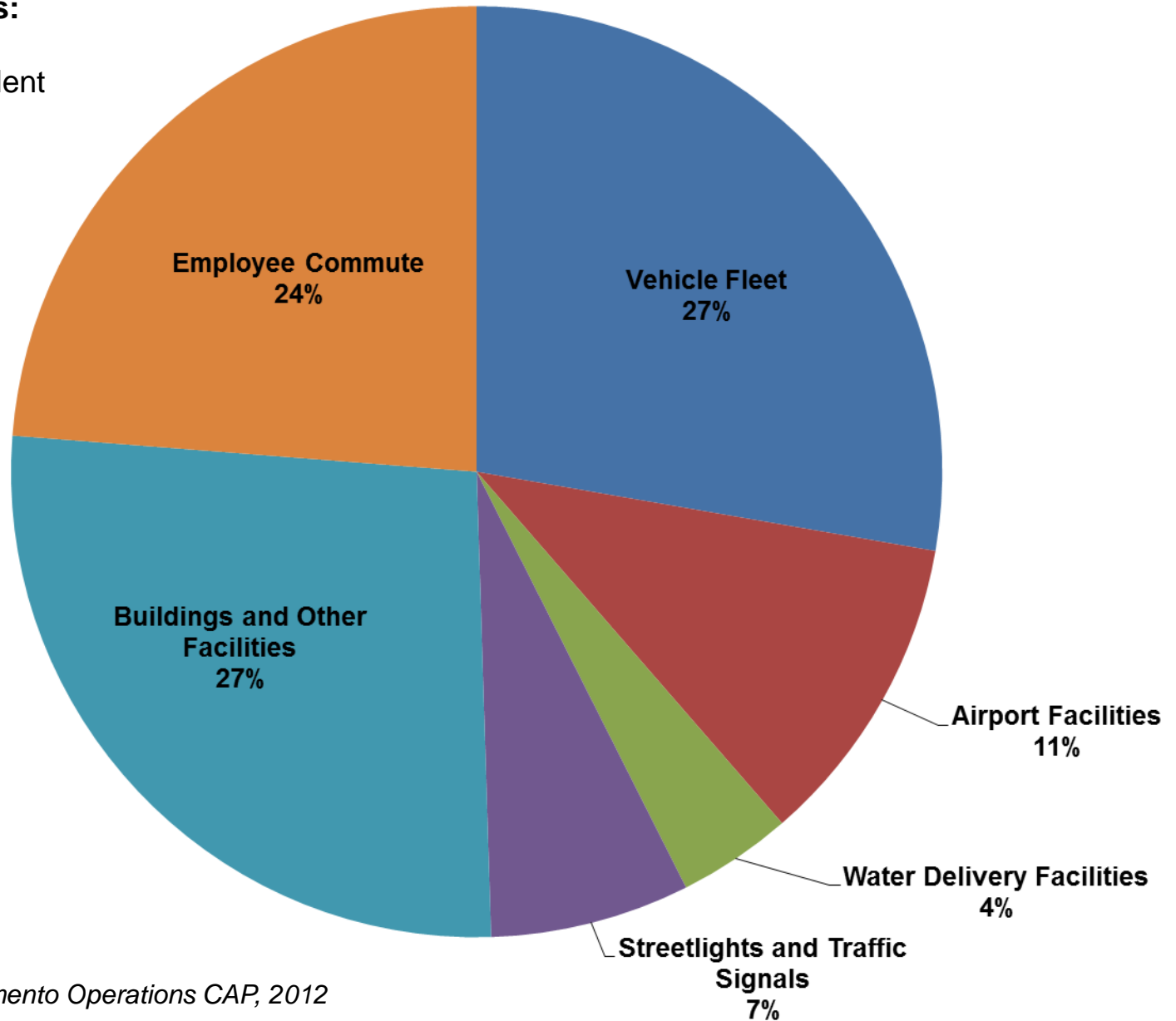
2005 Communitywide Baseline GHG Inventory

Total GHG Emissions:
4,987,668 metric tons of
carbon dioxide equivalent
(MTCO₂e)



2005 County Operations Baseline GHG Inventory

Total GHG Emissions:
134,930 metric tons of
carbon dioxide equivalent
(MTCO₂e)



Source: County of Sacramento Operations CAP, 2012

Project Process and Components

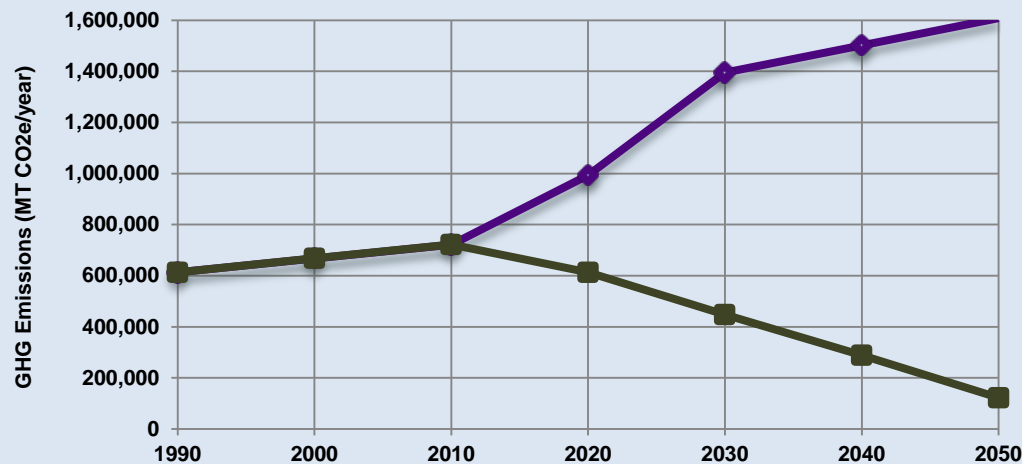
2. Forecast Future Growth in Emissions

- Business-as-Usual (BAU) growth (no actions taken)
- Legislative-adjusted BAU forecast
 - State and Federal actions, without local actions
- Years: 2020, 2030, 2050
 - Aligned with AB 32 and Executive Order B-30-15

Project Process and Components

3. Develop GHG Reduction Targets

- Aligned with Statewide GHG reduction targets
 - AB 32: 1990 levels by 2020
 - Executive Order B-30-15: 40% below 1990 levels by 2030
 - Executive Order S-30-05: 80% below 1990 levels by 2050



Note: this chart is for illustrative purposes only and does not represent Sacramento County's inventory, forecasts or targets

Project Process and Components

4. Prepare Climate Action Plan

- Perform GHG “gap analysis”
 - Compare legislative-adjusted forecasts & GHG targets
 - Identify local GHG reductions needed to achieve targets
- Identify & analyze local GHG reduction measures
 - Quantify GHG emissions reduction potential
 - Analyze feasibility of measures
 - Identify costs/benefits (environmental, economic, social)

Project Process and Components

4. Prepare Climate Action Plan (Continued)

- Revisit gap analysis
 - Has the gap been closed?
 - What additional measures, if any, are required?
 - Finalize list of GHG measures to meet targets.

Project Process and Components

4. Prepare Climate Action Plan (Continued)

- Draft CAP document for public review
- Final CAP document for public hearings and adoption

Project Process and Components

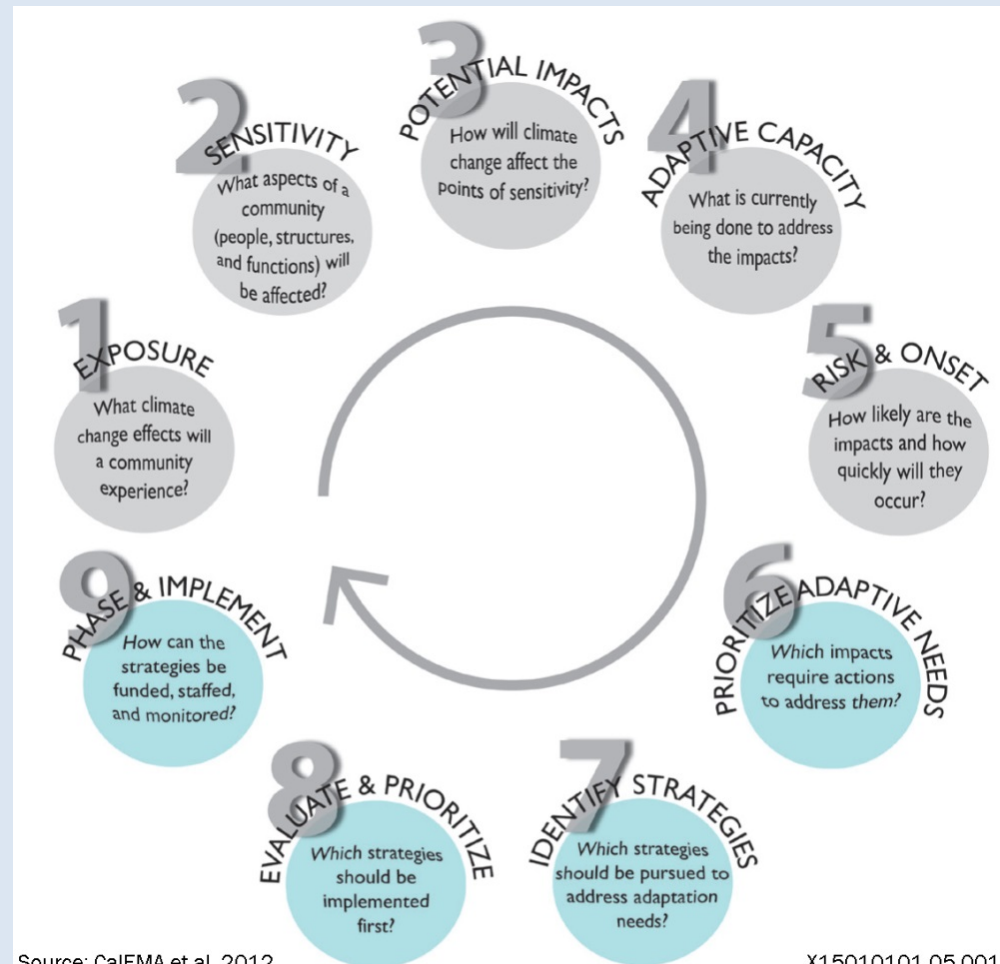
5. Monitoring & Verification

- Important to monitor CAP measures after CAP adoption to assess:
 - Performance
 - Gauge if County is on track to meet targets
- Periodic updates to CAP and components:
 - GHG Inventory: Quantitative Evidence of Progress
 - CAP: Keep Plan Fresh and on Track to Meet Goals

Project Process and Components

Climate Adaptation Planning

- Vulnerability Assessment
 - Technical study
 - Informs strategy development
- Develop Adaptation Strategies
 - Included in CAP document



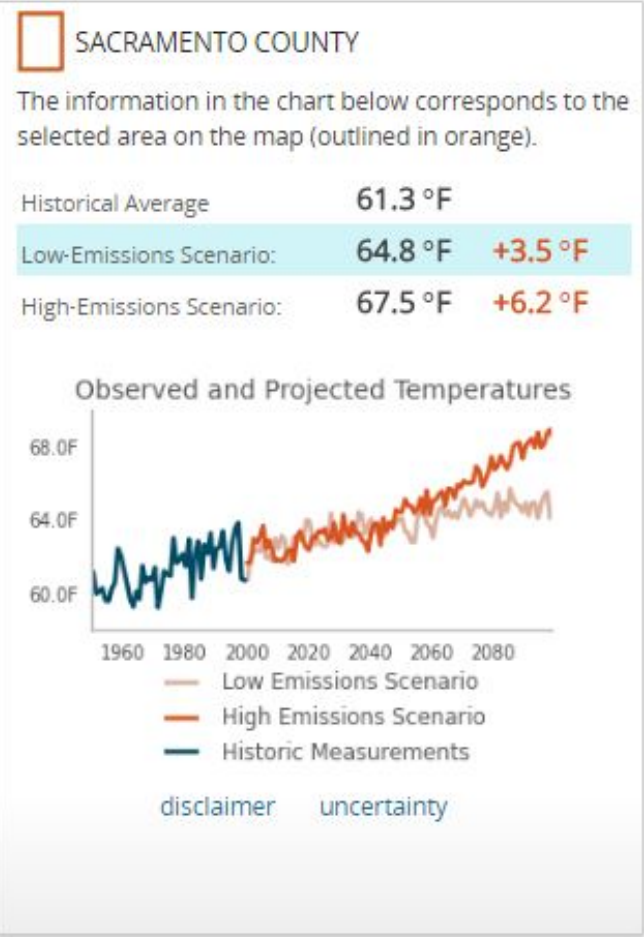
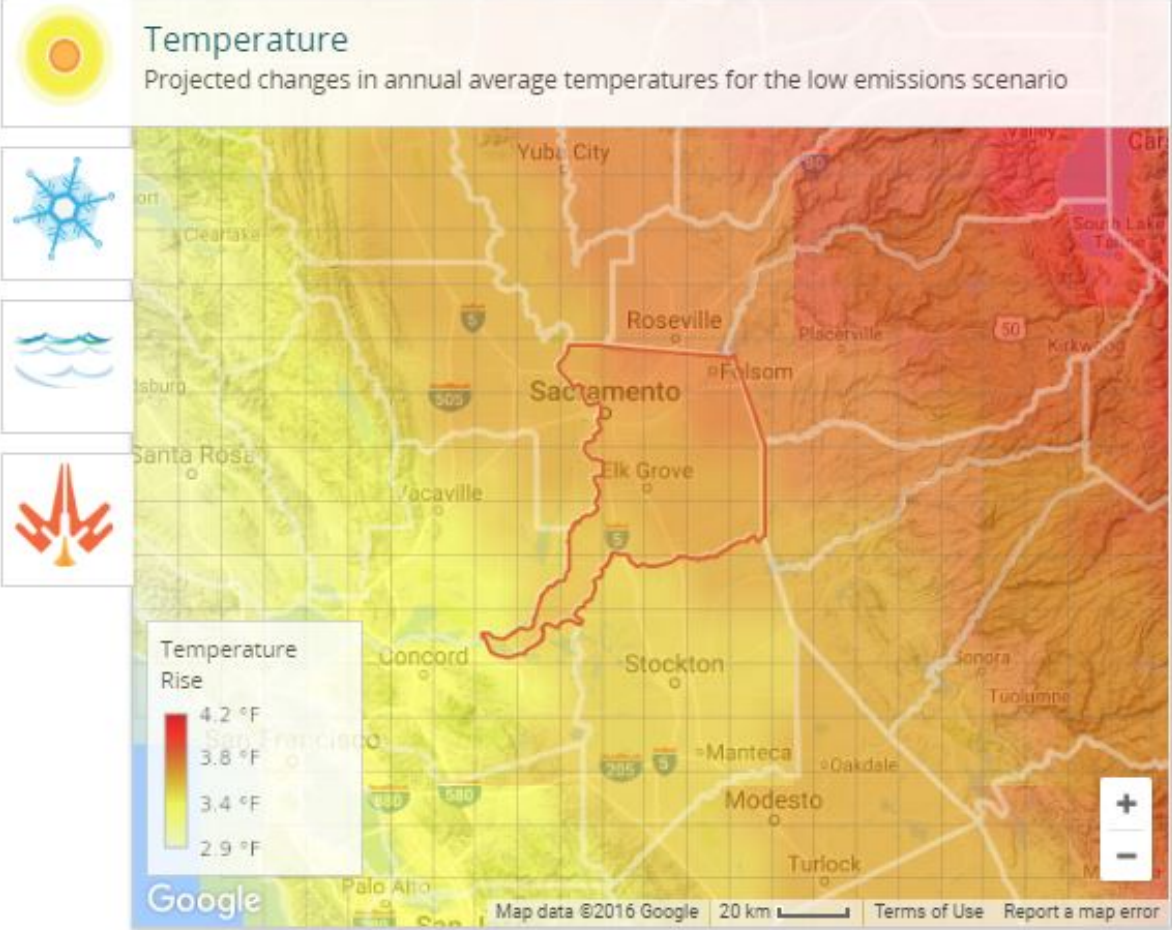
Source: CalEMA et al. 2012

X15010101 05 001

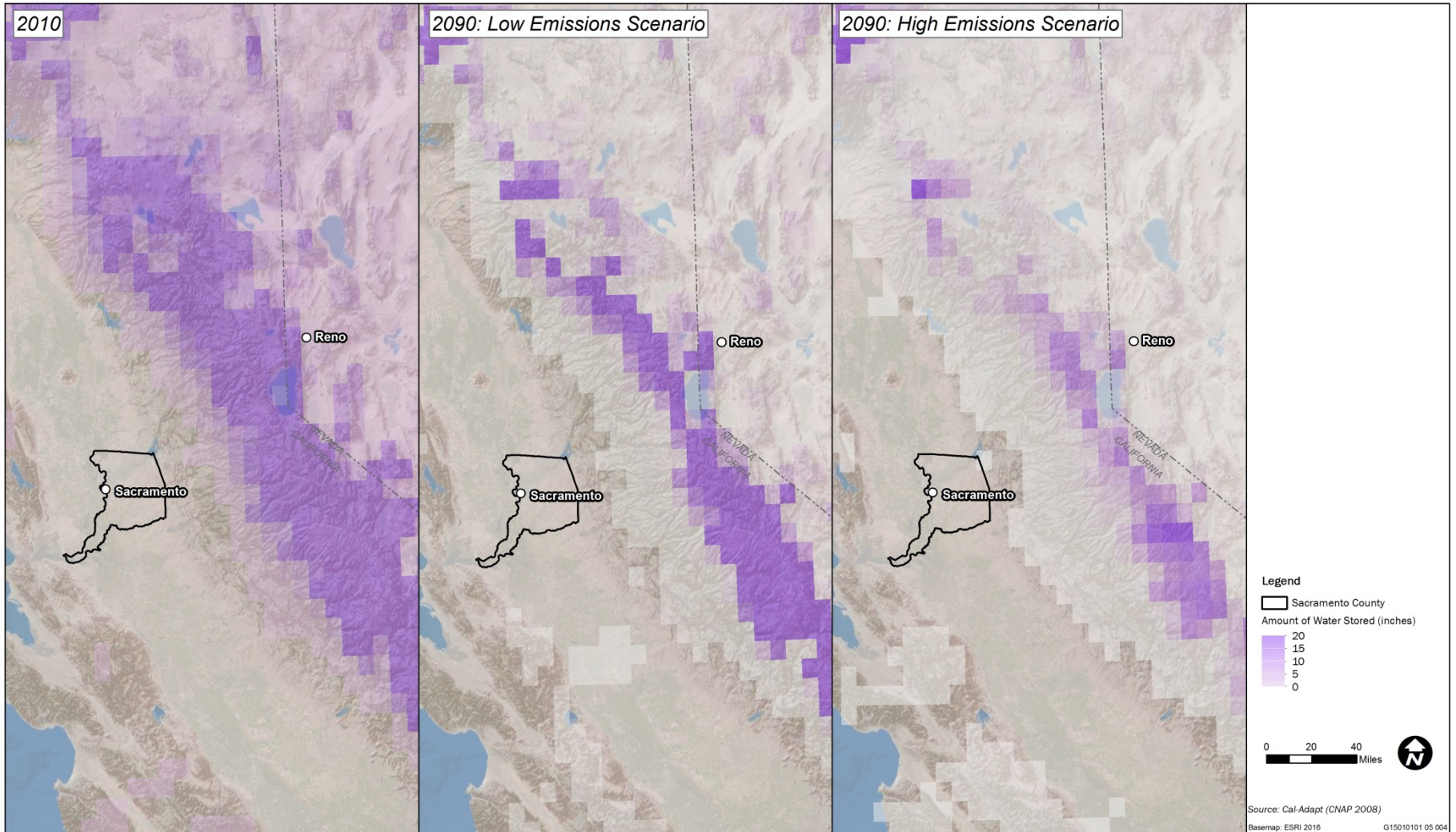
LOCAL CLIMATE SNAPSHOTS

Sacramento County, CA

Use Metric Units Use County Average

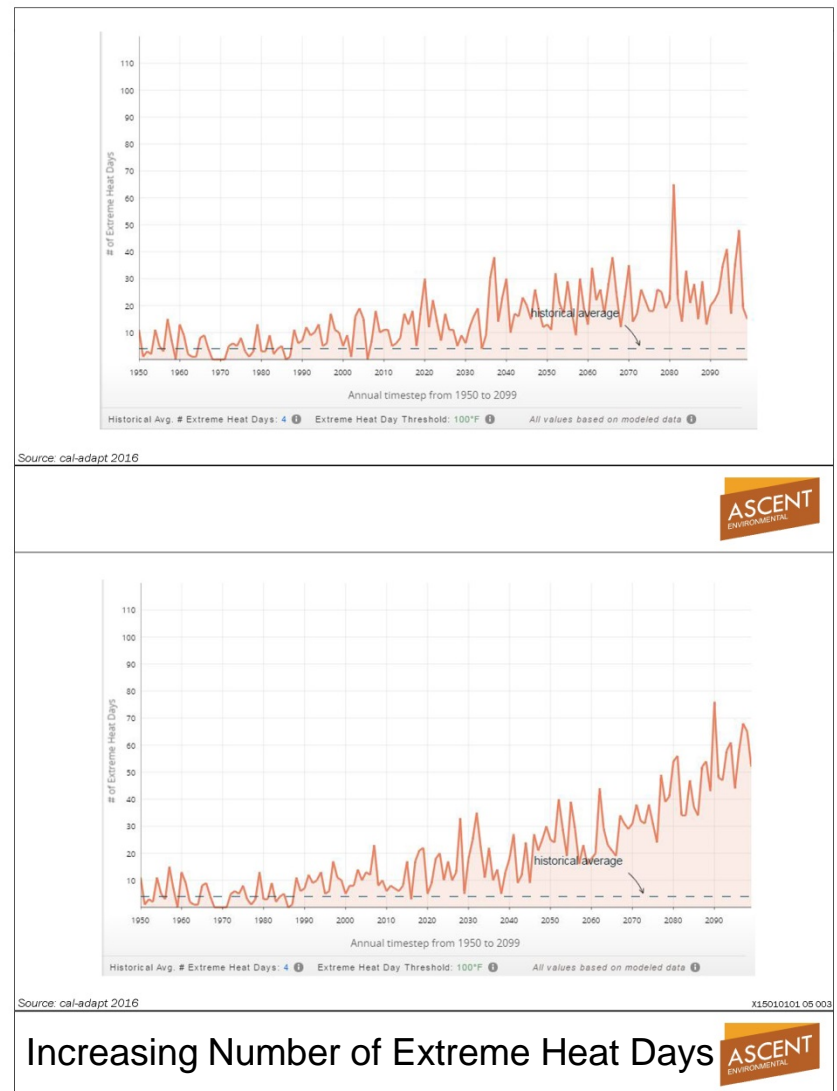
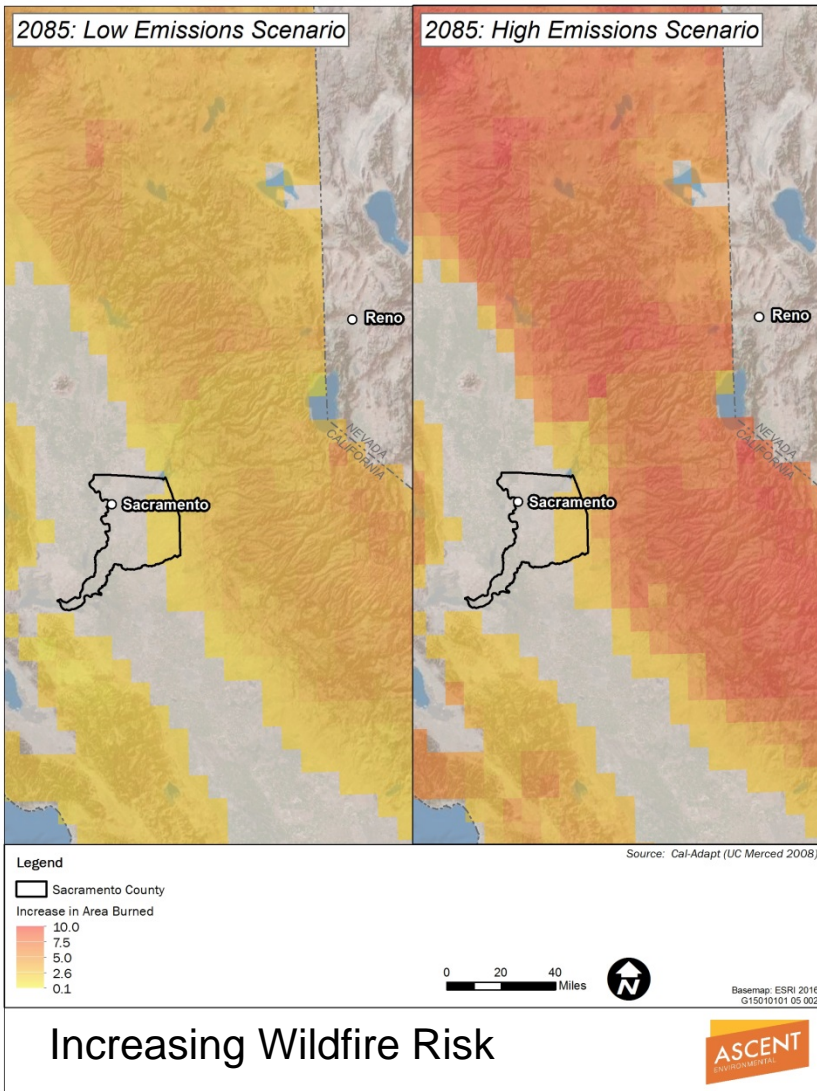


Increasing Average Temperatures



Snowpack Loss





Project Schedule and Milestones

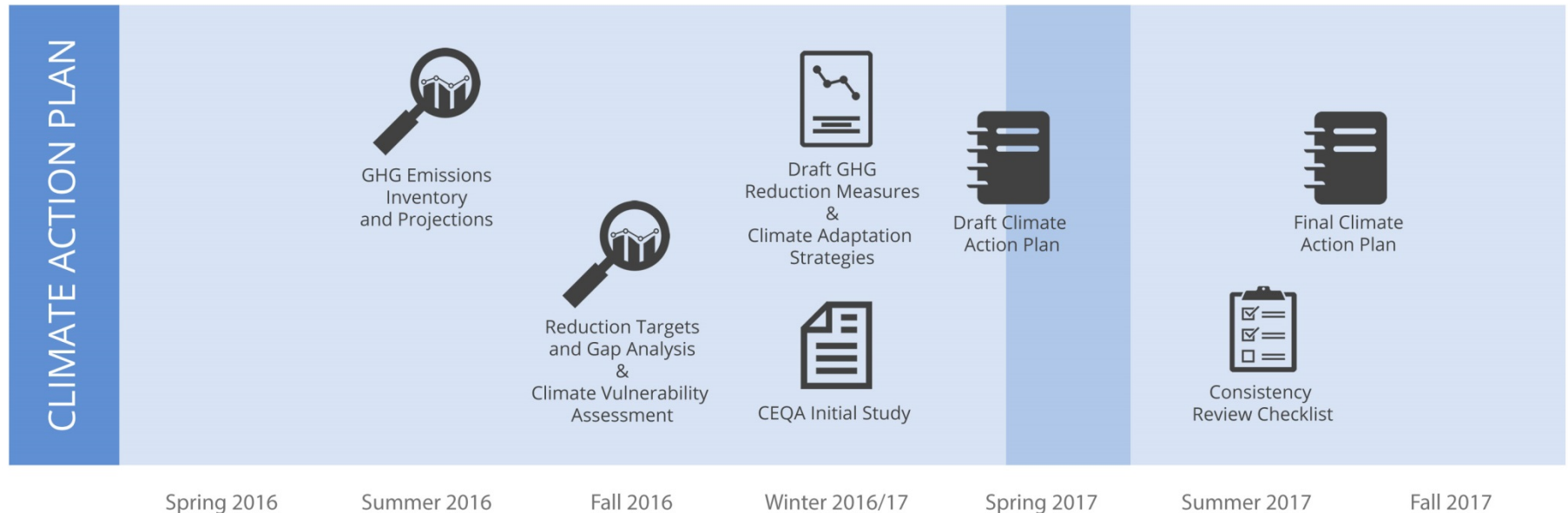
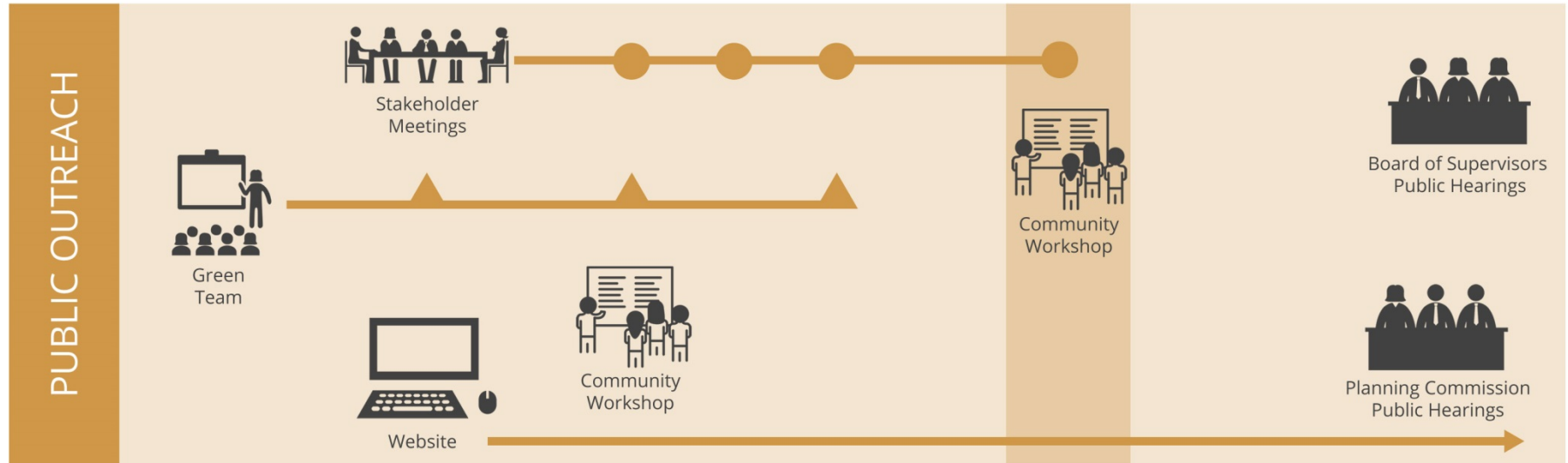
- Fall 2016
 - Complete GHG inventory, forecasts, and targets
 - Draft vulnerability assessment
- Winter 2016/17
 - Analysis of draft GHG reduction measures and adaptation strategies
- Spring 2017
 - Draft CAP issued for public review
- Summer/Fall 2017
 - Finalize and adopt CAP

Public Involvement

- Stakeholder and Public Input
 - Stakeholder Meetings
 - Communitywide Public Workshops
 - Public Hearings
 - Written Comments

Climate Action Plan Draft Schedule

PUBLIC COMMENT PERIOD ON DRAFT



Public Involvement

- Stay Informed

- Webpage
- GovDelivery Subscription

- Communications

- Todd Taylor, Project Manager
916-874-3125, taylor@SacCounty.net

- Your involvement is welcome and encouraged!

COMMENTS AND QUESTIONS