

# Natomas Joint Vision Open Space Program *Second Workshop*



**The City of Sacramento**



**The County of Sacramento**



**LAFCo**

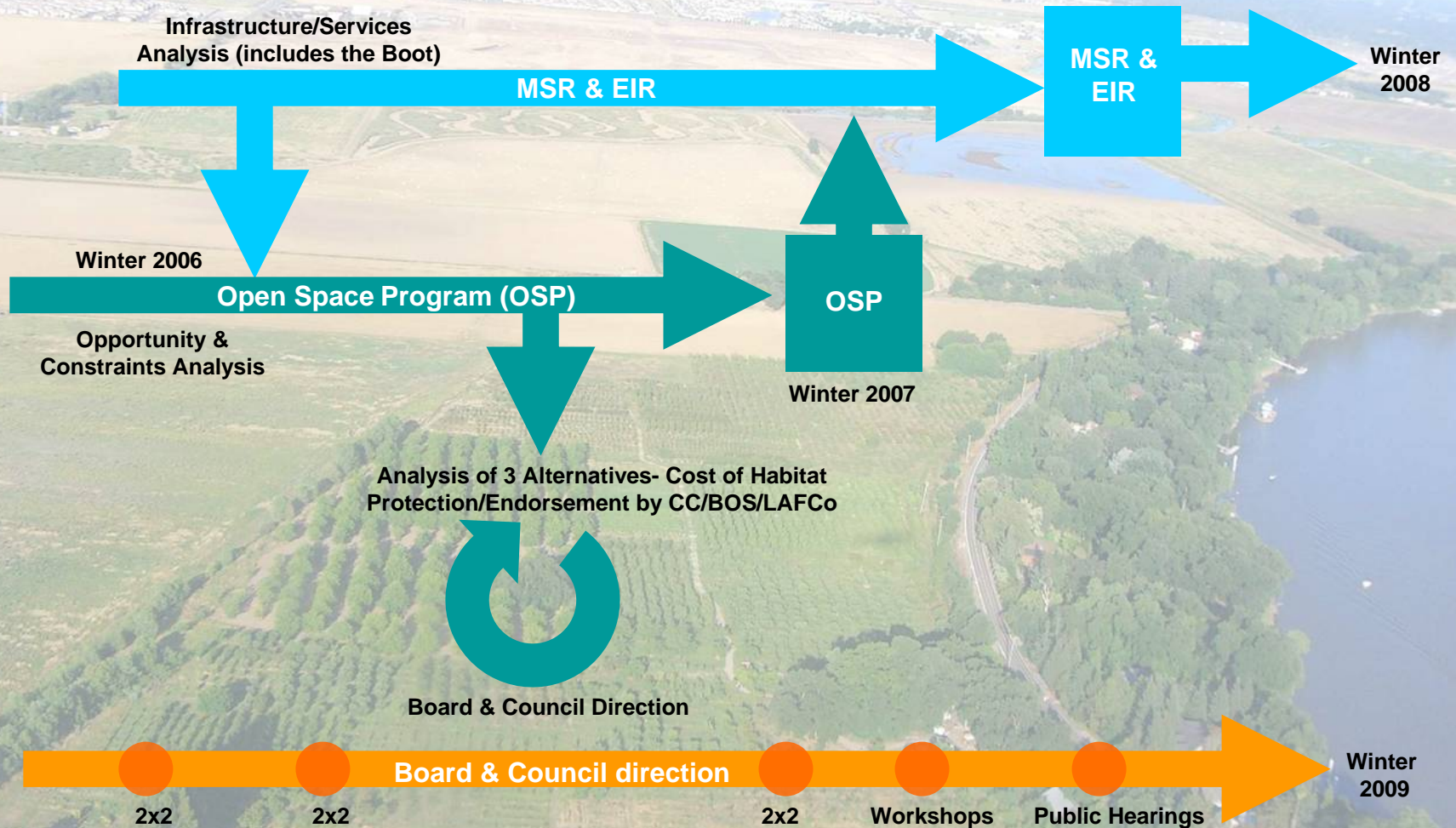


ERA Economic Research Associates  
EIP Associates  
a Division of PBS & J



# NATOMAS JOINT VISION COORDINATION

Municipal Services Review, Open Space Program, & Board/Council Direction





# Acreeage Summary

Total Basin:	53,500 ac.
<u>- Committed Land:</u>	<u>39,297 ac.</u>
Available In Basin:	14,203 ac.
<u>- Within Sutter Co:</u>	<u>2,035 ac.</u>
<b>Available In Sac. Co:</b>	<b>12,168 ac.</b>



# Acreeage Summary

- Committed Land
  - NBHCP Exempt Lands
  - NBHCP Permitted Lands
  - Lands for NBHCP Mitigation
  - Airport Lands
  - Golf Course
  - SAFCA levee improvement program





# Next Steps

- Third Workshop
  - Open Space Configuration Exercise
  - Will be scheduled for mid-July

- Will post meeting summaries at

City website:

<http://cityofsacramento.org/planning/projects/natomas-joint-vision/index.cfm>

County website:

<http://www.planning.saccounty.net/longrange/city-county.html>