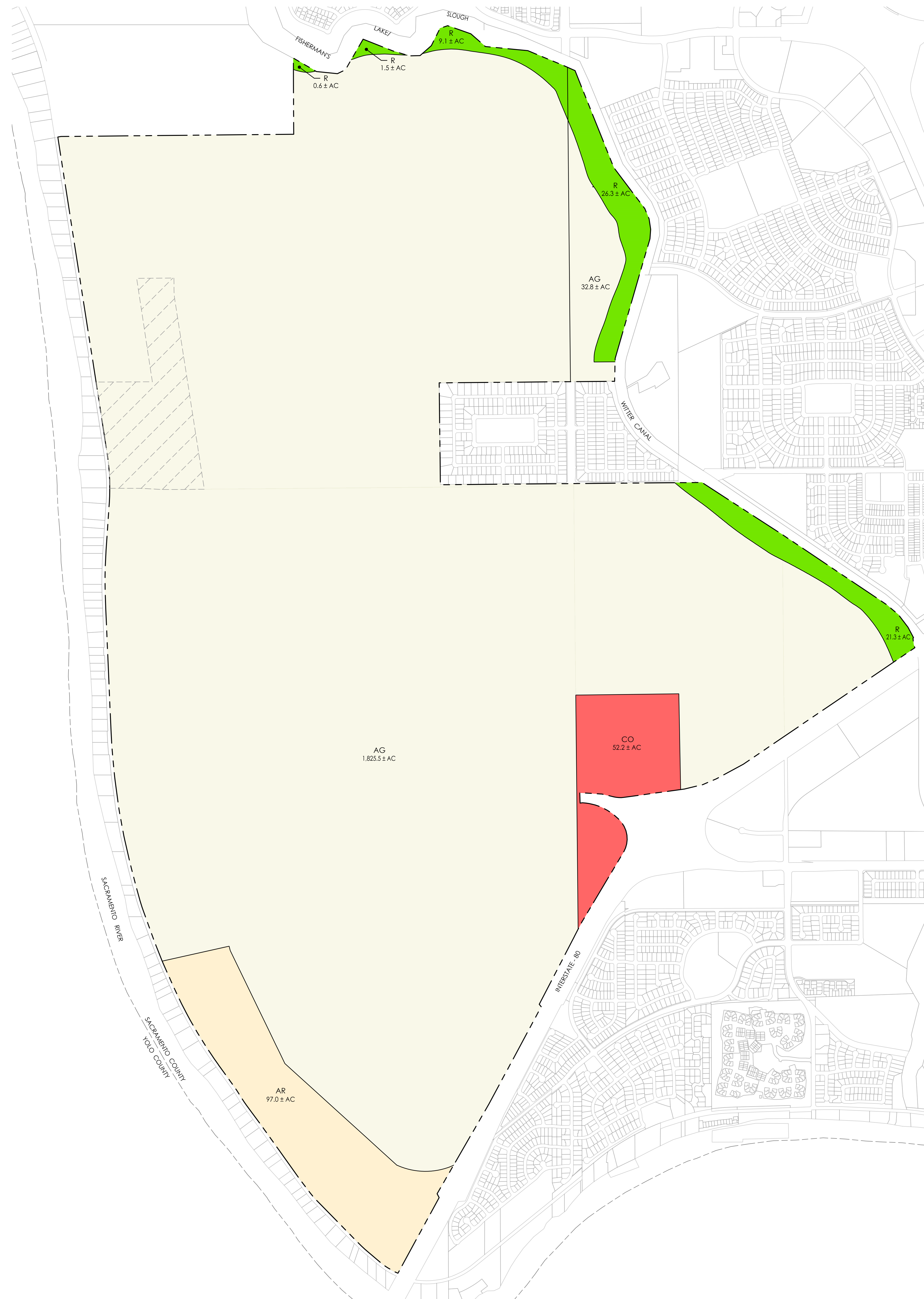
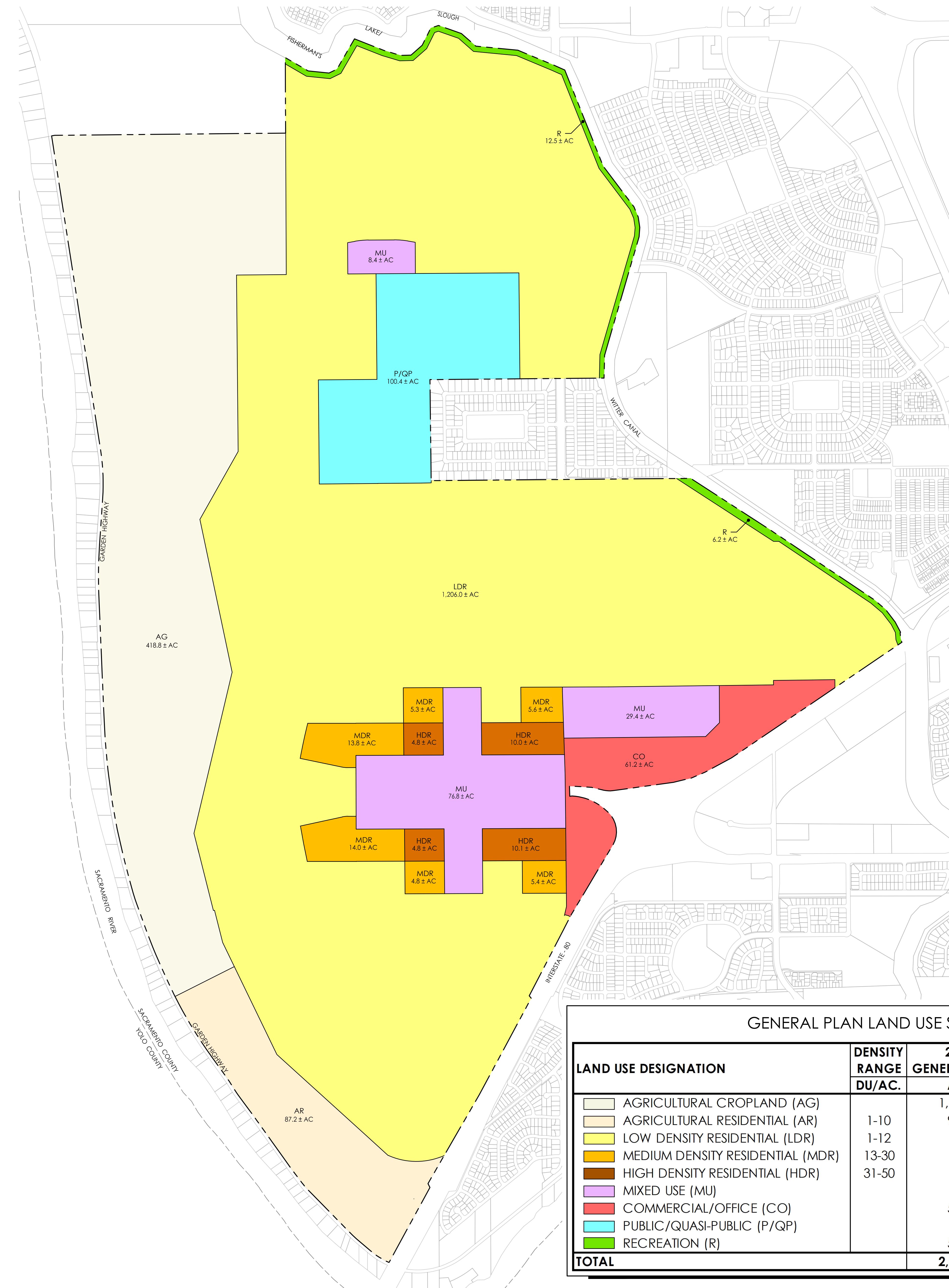


GENERAL PLAN AMENDMENT - LAND USE EXHIBIT
UPPER WESTSIDE
 COUNTY OF SACRAMENTO, CALIFORNIA
 JANUARY 15, 2024



SACRAMENTO COUNTY 2030 GENERAL PLAN DESIGNATIONS



UPPER WESTSIDE GENERAL PLAN AMENDMENT

GENERAL PLAN LAND USE SUMMARY				
LAND USE DESIGNATION	DENSITY RANGE	2030 GENERAL PLAN	GENERAL PLAN	DIFFERENCE
	DU/AC.	AC.	AC.	AC.
AGRICULTURAL CROPLAND (AG)		1,858.3	418.8	-1,439.5
AGRICULTURAL RESIDENTIAL (AR)	1-10	97.0	87.2	-9.8
LOW DENSITY RESIDENTIAL (LDR)	1-12	0	1,186.8	1,186.8
MEDIUM DENSITY RESIDENTIAL (MDR)	13-30	0	48.9	48.9
HIGH DENSITY RESIDENTIAL (HDR)	31-50	0	29.7	29.7
MIXED USE (MU)		0	114.6	114.6
COMMERCIAL/OFFICE (CO)		52.2	61.2	9.0
PUBLIC/QUASI-PUBLIC (P/QP)		0	100.4	100.4
RECREATION (R)		58.8	18.7	-40.1
TOTAL		2,066.3	2,066.3	0.0

RESOURCE CONSERVATION AREA - PROTECTED

